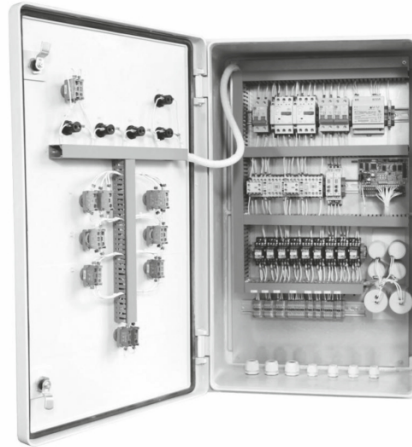




# Zhaik Electric

Quality! Production! Solutions!

## Control Cabinets



**Control cabinets (CC)** are responsible for monitoring and controlling the main parameters of technological processes. Depending on the sector of application and the composition of the used equipment, different types of control cabinets are manufactured. Structurally, such cabinets are made in the form of a metal case, inside which all main devices are installed, and outside - control and signaling elements.

Scope of application of control cabinets:

- - electric power industry;
- - Housing and communal objects;
- - chemical industry;
- - metallurgical industry;
- - oil and gas industry.

Depending on the modification of the automation cabinet solves the problems:

- - fire extinguishing;
- - lighting;
- - heating;
- - ventilation/air conditioning;
- - video surveillance.

The automation cabinet automates the operation of the facility without the need for the constant presence of service personnel.

The control cabinet is made in different versions: mounted, recessed, floor-standing.

Control cabinets as non-standard equipment are made according to the technical specifications of the customer.